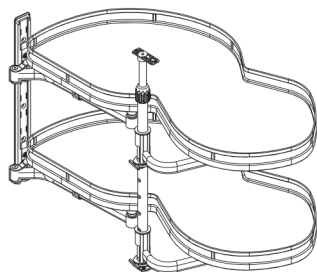
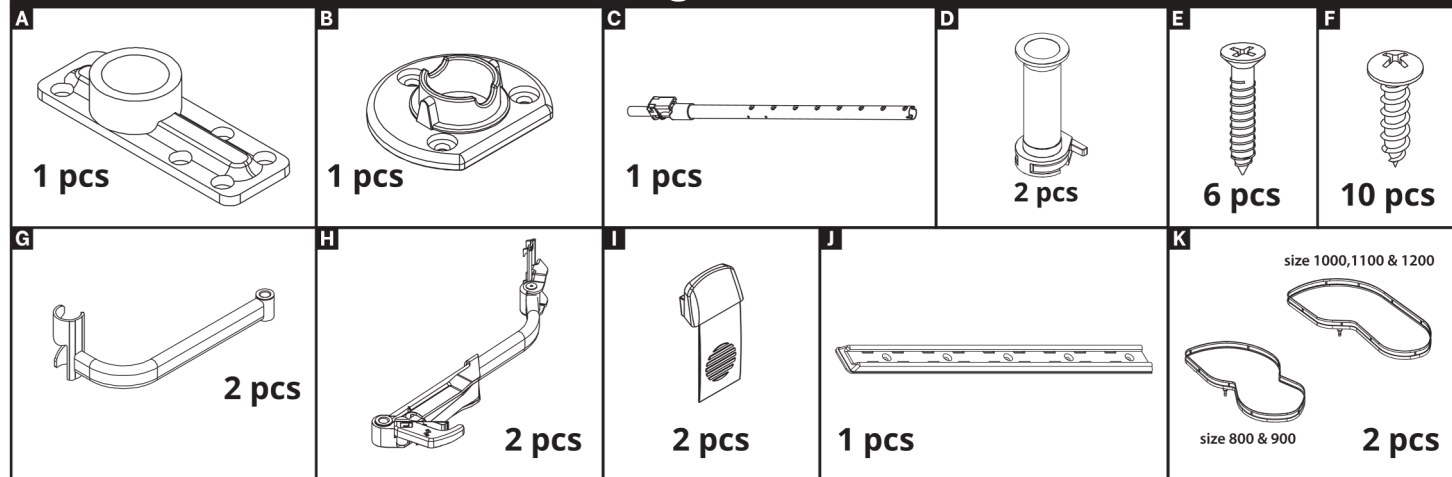


**Information:**

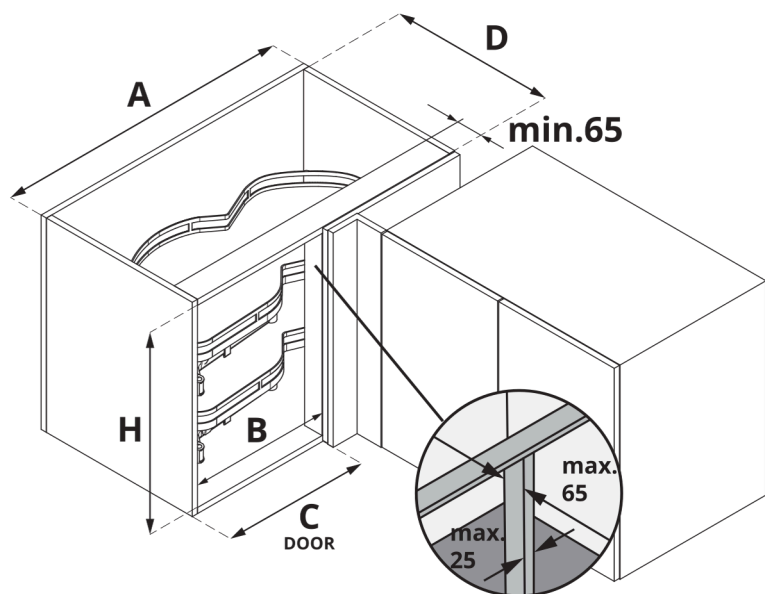
1. Please read the instructions carefully before assembly
2. The instruction is intended for sizes 800/900/1000/1100/1200 (left and right sides are symmetrical)



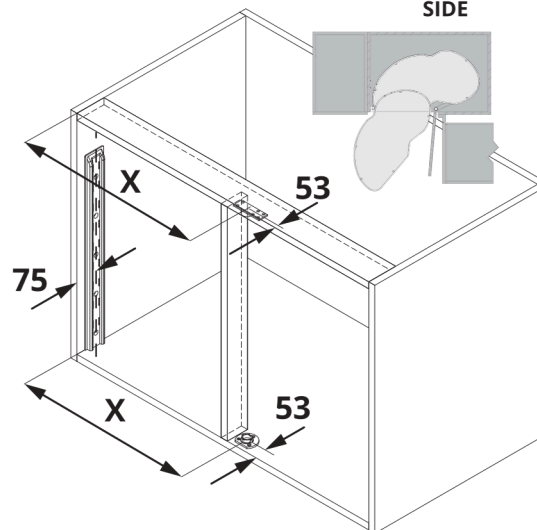
**Package contents:**



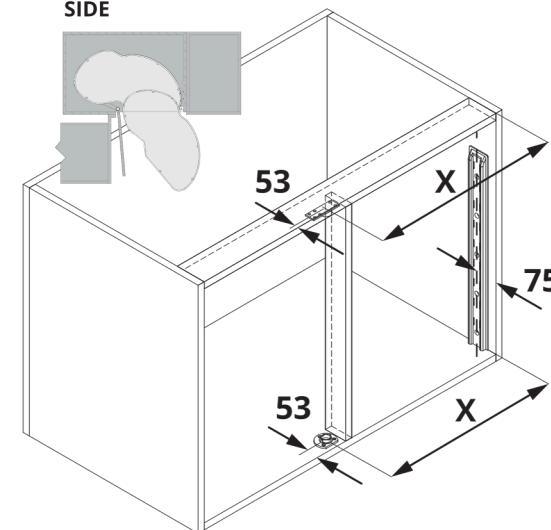
**2. Specifications and appropriate cabinet size (front opening angle  $r > 90^\circ$ )**



**3. Space requirements / mounting dimensions LEFT SIDE**



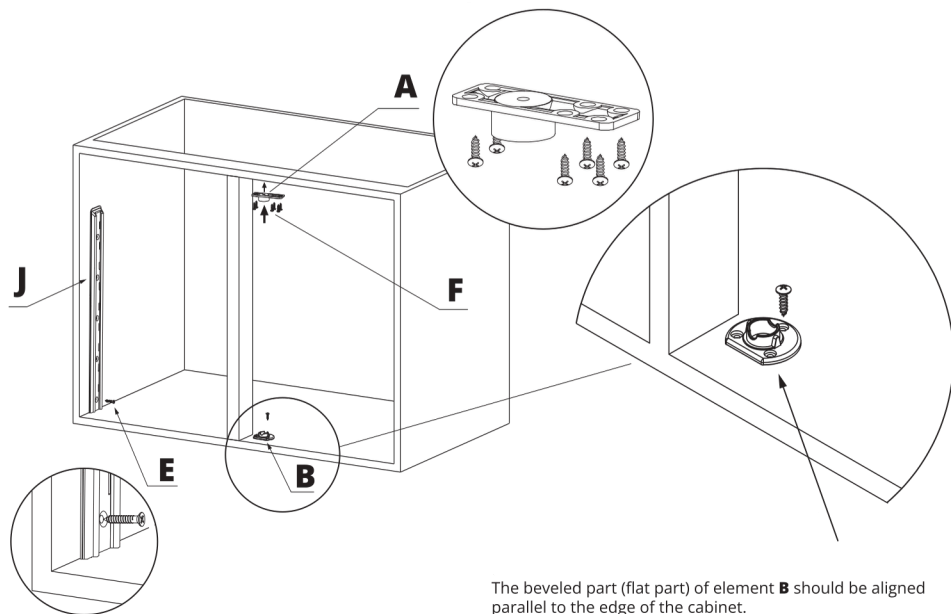
**RIGHT SIDE**



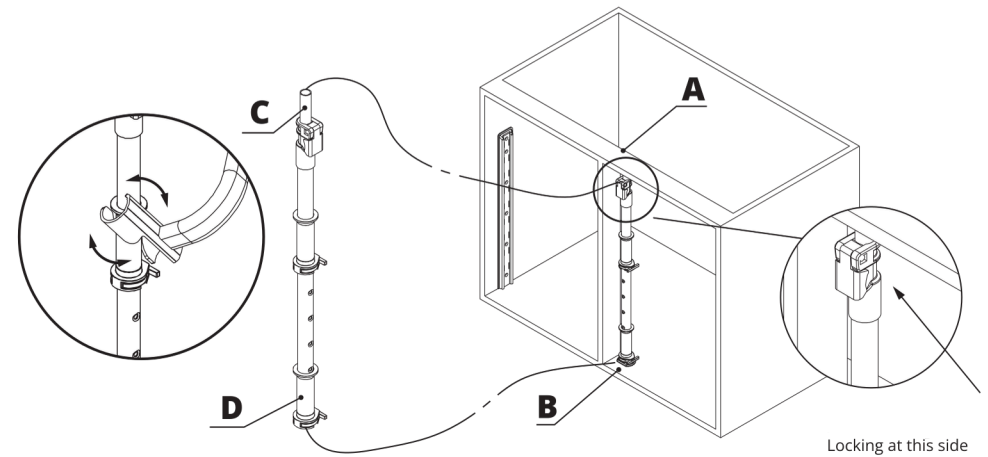
A	B	C	D	H	X
800	min. 370	400	min. 472	600-850	426
900	min. 411	450	min. 482	600-850	476
1000	min. 475	500	min. 500	600-850	576
1100	min. 525	550	min. 500	600-850	576
1200	min. 561	600	min. 500	600-850	626

## Mounting instructions

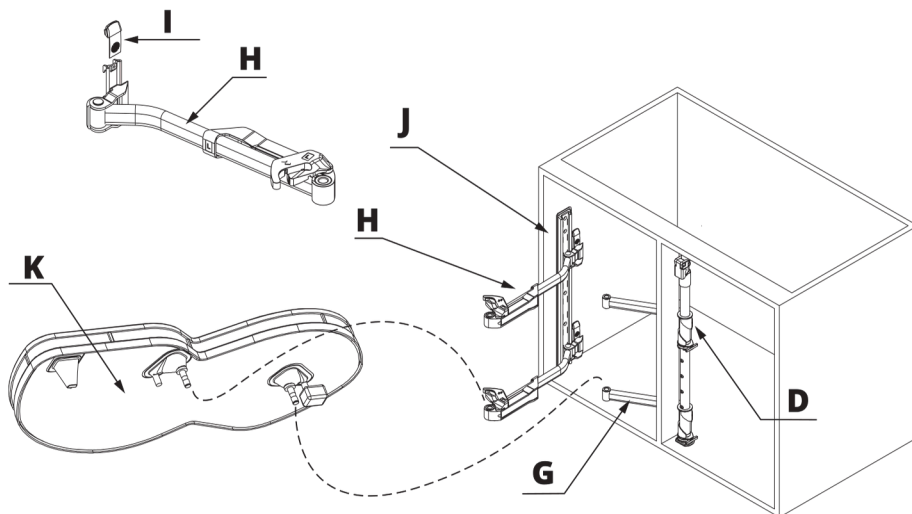
1. Attach element **J** with screws **E**. Attach element **A** to the top and element **B** to the bottom of the cabinet using screws **F**.



2. Slide element **D** onto part **C**, then place it on the element **B**. Adjust the height of the element **C** and lock it in place.



3. Slide element **I** onto element **H**, then attach it to element **J**. Connect element **G** with element **D**. Mount drawer **K** as illustrated in the drawing



4. Assembly completed

